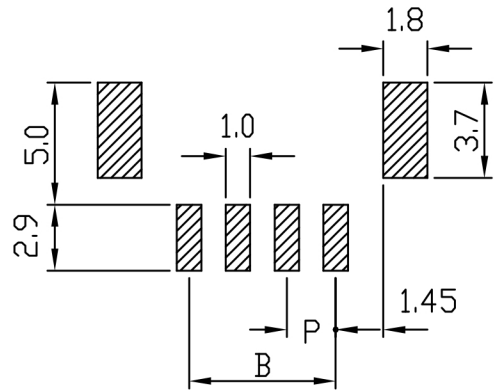
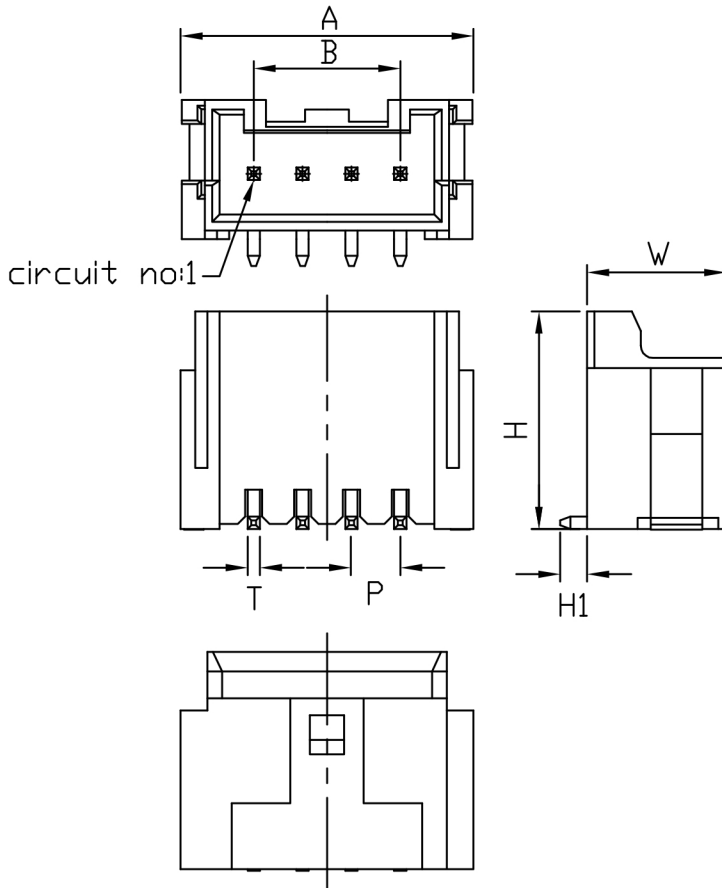


# DRAWING OF FINISHED PRODUCTS



RECOMMENDED P.C. BOARD LAYOUT DIMM.

ITEM NO:JM20A-2 TO -6(SMT)  
 MATERIAL:NYLON66 UL94V-0  
 VOLTAGE RATING:AC,DC,250V  
 CURRENT RATING:AC,DC,3A Max  
 CONTACT RESISTANCE: 20mΩ Max  
 INSULATION RESISTANCE:1.000MΩ Min.  
 TEMPERATURE RANGE:-25° TO +85°  
 WITHSTANDING VOLTAGE:800V AC/Minute

	A ± 0.3	B ± 0.2
JM20A-2(SMT)	8.0	2.0
JM20A-3(SMT)	10.0	4.0
JM20A-4(SMT)	12.0	6.0
JM20A-5(SMT)	14.0	8.0
JM20A-6(SMT)	16.0	10.0

**DIMENSION:(MM)**

T:  $0.5 \pm 0.03$   
 P:  $2.0 \pm 0.1$   
 H:  $8.9 \pm 0.2$   
 H1:  $1.4 \pm 0.2$   
 W:  $5.7 \pm 0.2$