

MbitBot V1.2

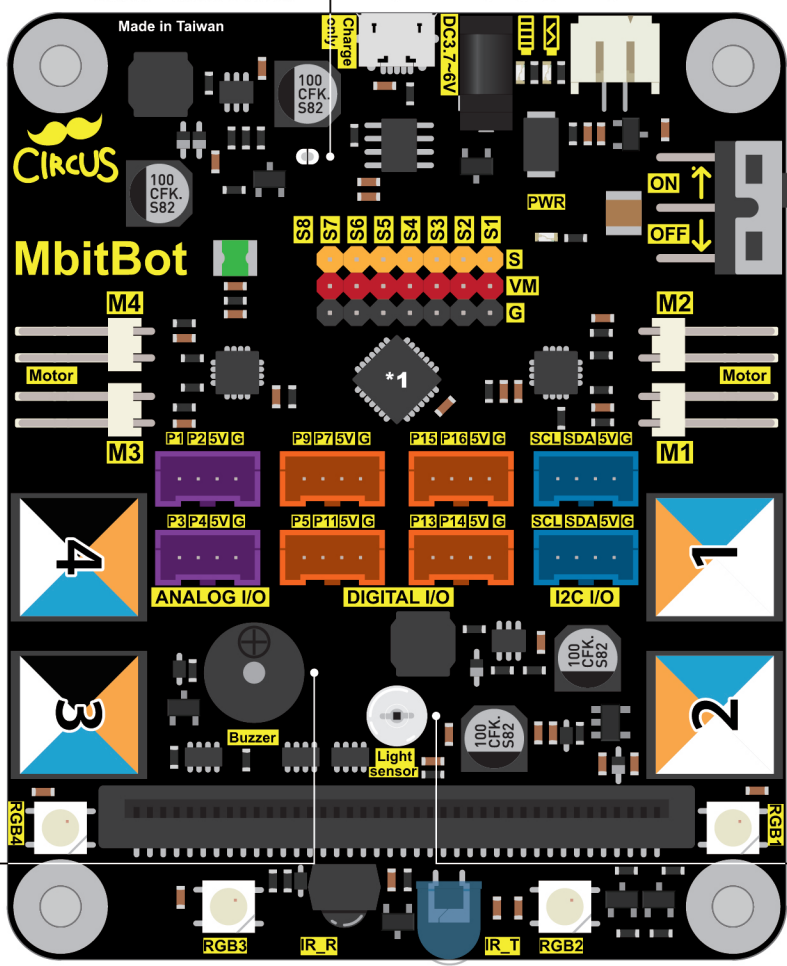
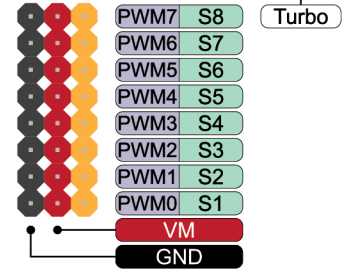
2018.10.26

PINOUT DIAGRAM

- POWER**
- GROUND**
- SERIAL PIN**
- ANALOG PIN**
- PORT PIN**
- PIN FUNCTION**
- PWM PIN**

***1**
PCA9685 16 channel 12Bit PWM
I2C Address: E0h

High 6V #Turbo
Low 4.2V #Default
(adjust by software)



Stepper Motor	DC Motor	PWM Pin
B-	M4	PWM10
B+		PWM11
A-	M3	PWM8
A+		PWM9

SCL	SDA	Pin
SCL	SDA	P20
SCL	SDA	P19
GND		P19
+5V		P3
P3		P4
P4		P4

SCL	SDA	Pin
SCL	SDA	P20
SCL	SDA	P19
GND		P19
+5V		P1
P1		P2
P2		P2

RGB LED	Pin
RGB LED	P12
Buzzer	P0

Infrared-Rx	Pin
Infrared-Rx	P8
GND	
+5V	
P7	
P9	
GND	
+5V	
P2	
P1	

Button A	Button B	Pin
Button A	Button B	P5
Button A	Button B	P11
Button A	Button B	+5V
Button A	Button B	GND

DC Motor	Stepper	PWM Pin
M2	A+	PWM15
	A-	PWM14
M1	B+	PWM13
	B-	PWM12

SCL	SDA	Pin
SCL	SDA	P16
SCL	SDA	P15
+5V		P15
GND		P19
P19	SDA	P19
P20	SCL	P20

SCK	Pin
SCK	P14
SCK	P13
+5V	
GND	
SDA	P19
SCL	P20

Light Sensor	Pin
Light Sensor	P10

Infrared-Tx	Pin
Infrared-Tx	P6
MOSI	P15
MISO	P16
+5V	
GND	
SCL	P20
SDA	P19
+5V	
GND	

SCL	SDA	Pin
SCL	SDA	P20
SCL	SDA	P19
GND		P20
+5V		P19
SCK		P14
SCK		P13

